



Trade DeFi Like a Pro

Professional trading terminal with scalable charts from DEXs and CEXs

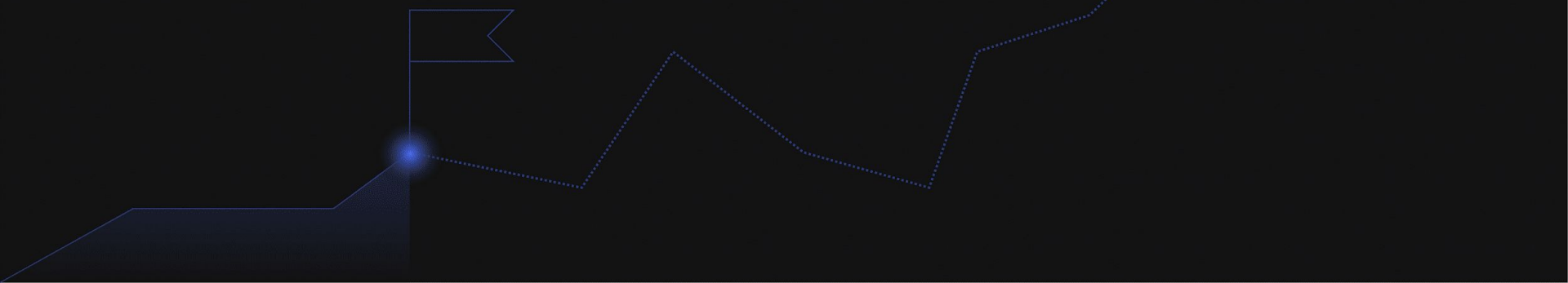
As of today, there isn't even one professional terminal for trading and analysis within DeFi.

Why?

- 1 There is a lack of quality historical data.
 - 2 The Graph is too slow for processing a large volume of data.
 - 3 Uniswap and others lack API
- ... and much more

Such a low level of infrastructure makes sense with the crypto industry being at the beginning of its journey.

Problem





Product

01

Free Scalable Charts

Follow **up to 8 charts** for assets traded on more than **40 DEXs** – all in one tab.

02

DEX Trade Widget

Trade via **Uniswap, 1inch, or Paraswap** right from within the Kattana terminal.

03

Limit orders

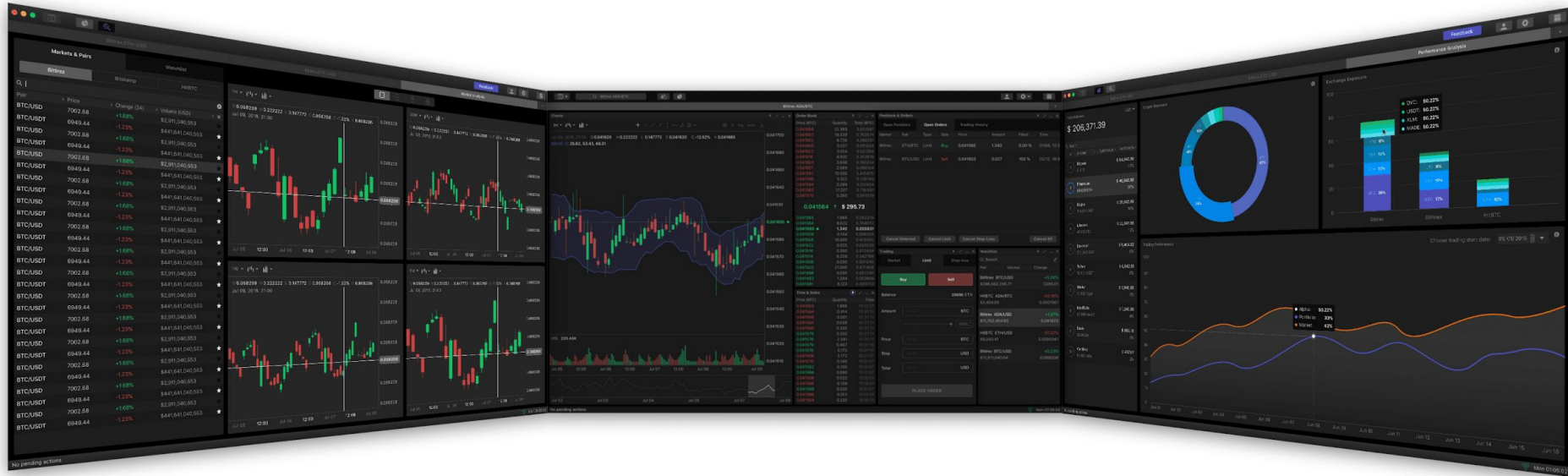
And absolutely novel way to work with a DEX. **3 types of limit orders**

Product





SIMPLE AND PROFESSIONAL INTERFACE FOR DEX



With Kattana.trade, you can trade and exchange crypto on DEXs (with complex order types, charts, and analytics).

Why
customers
choose
us?

All you need in one place:

Scalable charts

Graphs from DEXs and CEXs

Trading panel with market and limit orders

Trade right from within the platform: no need to find contract addresses nor DEXs where the assets are traded. Just select Buy/Sell, order type, and go!

The best, simplest UI and UX

Powered by 3 years of feedback, our team created the best professional trading interface in the industry.

Aggregated cryptocurrency news

Why try keeping track of hundred of resources and be subscribed to more projects on social media than you can ever keep a track of? Sign up for Kattana News and get exclusive, aggregated news about the what you care about - all in one place.

Trading analysis of ERC-20 addresses

From now on, the transactions in your wallet won't be a black box to you. Kattana.trade will calculate the P&L of all your transactions, will generate a profitability chart, and structure all transactions as trades.

Competitors

	Scalable charts	Trading on DEX	Limit orders	Aggregated cryptocurrency news	Trading analysis of ERC-20 addresses
	✓	✓	✓	✓	✓
	✗	✗	✗	✗	✗
	✗	✗	✗	✗	✗
	✓	✗	✗	✗	✗
	✓	✗	✗	✗	✗
	✗	✓	✓	✗	✗

	Free Plan Free	Basic Plan 0.06 ETH in KTN monthly or hold 130 KTN	Pro Plan 0.1 ETH in KTN monthly or hold 250 KTN	Fund 0.15 ETH in KTN monthly or hold 400 KTN
Trading on DEX	Included	Included	Included	Included
Charts per tab/total tabs	2/1	4/1	8/2	8/4
ERC-20 wallets connected	1	2	4	∞
3 types of limit orders	Included	Included	Included	Included
Analysis of ERC 20 wallets per day	3	30	300	∞
News	Not aggregated	Aggregated	Aggregated by watchlist	Aggregated by watchlist

The **economic model** of the **KTN** token is based on the **deficit of supply** that comes about as more users join the platform. With **35,000 users** each **holding on average 260 tokens**, the deficit reaches its peak and the supply of tokens on the market should completely run out. With the growth of the platform's userbase, the deficit level (and deflation) grows exponentially, which in turn increases the price of the KTN token.

Market

In the graphic, you can see how this deflationary model works.

The effect of the number of users on the price of KTN.

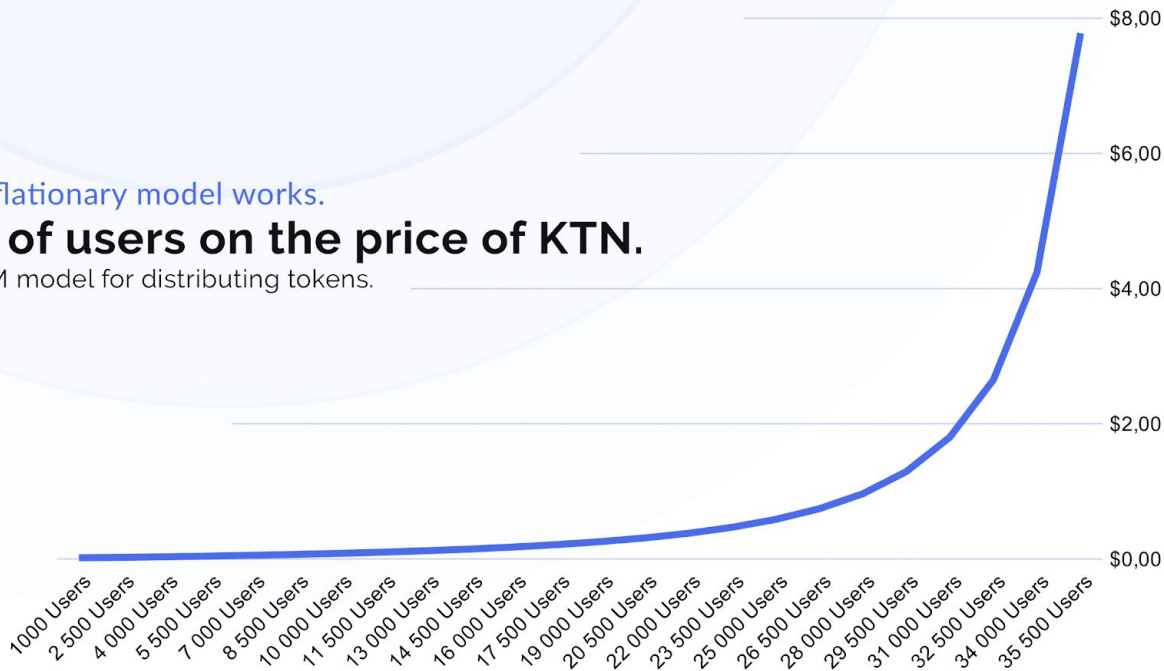
For the calculations, we use the Uniswap AMM model for distributing tokens.

Market Opportunity:

Total DEX users on January 2020: > **25 000**

Total DEX users on January 2021: > **292 000**

Total Binance users: > **16.7 mio**



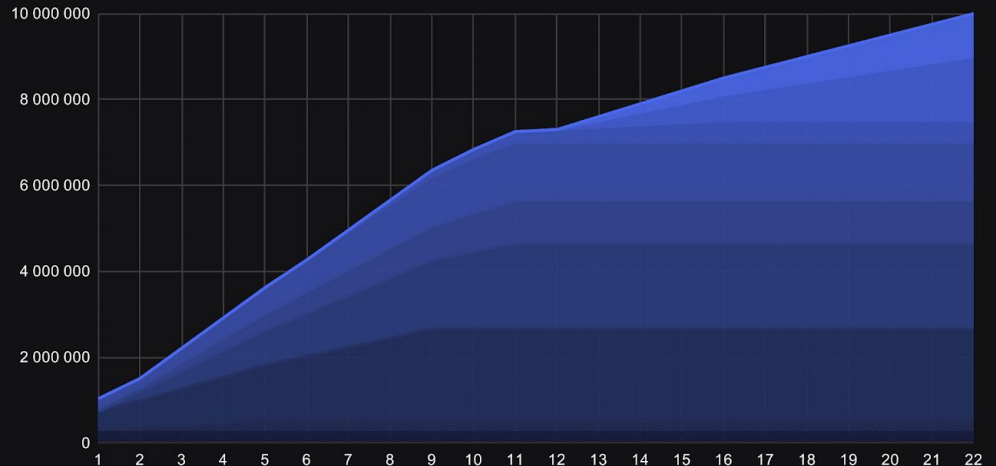
Tokenomics

Initial Market Cap after listing:	612.500 USD
Start price on Uniswap:	1 USD
Initial circulating supply:	612.500 USD or 6.125% or 612.500 KTN
Seed:	300.000 USD, fully diluted mcap of \$3M USD.
Private:	810.000 USD, fully diluted mcap of \$6M USD.
Strategic:	225.000 USD, fully diluted mcap of \$7.5M USD.
Public:	200.000 USD, fully diluted mcap of \$10M USD.

Tokenomics

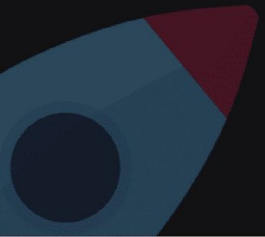
Total supply: 10,000,000 KTN

		Allocation	Unlock
Seed sale	0.3 USD per KTN	10%	10% unlocked on day 1, 1 month cliff, daily linear over 9 months
Private sale	0.6 USD per KTN	13,5%	15% unlocked on day 1, 1 month cliff, daily linear over 8 months
Strategic	0.75 USD per KTN	3%	20% unlocked on day 1, and daily linear over 4 months
Public sale	1 USD per KTN	2%	100% unlocked before listing
Liquidity fund		21,5%	20% unlocked before listing, then 10% monthly over 8 months
Foundation		20%	0% unlocked on day 1, vesting over 10 months
Team		15%	1-year fully locked, then 10% monthly over 10 months
Reserve		10%	1-year fully locked, then 10% monthly over 10 months
Advisors & future team		5%	10% unlocked on day 1, 6 months cliff, 10% monthly for 10 months

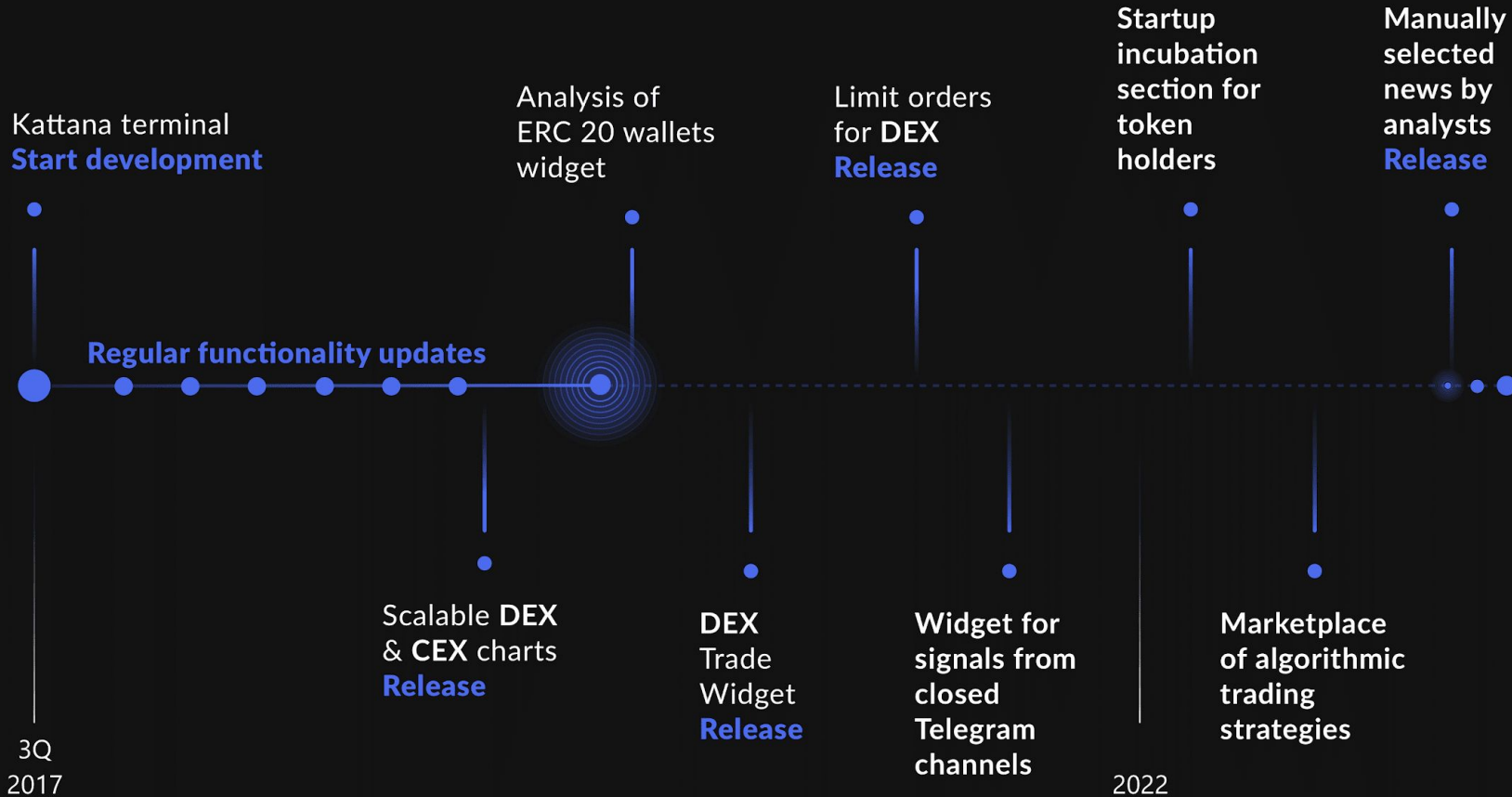


The Mathematics of Tokenomics
The Psychology of the Market
And HYPE

Launch a rocket



Roadmap



Website: kattana.trade

Telegram: [kattana_trade](https://t.me/kattana_trade)

Twitter: [@kattanatrade](https://twitter.com/kattanatrade)

Email: contact@kattana.trade

Thank you!